



FUSION BATTERY

LITHIUM

V-LFP-12-100S

Bluetooth

LITHIUM IRON PHOSPHATE BATTERY

PERFORMANCE

- Long Cycle Life >2000 cycles @ 100% DOD.
- High Density, High Discharge Current, High Temperature Range.
- Low Weight, Maintenance Free.
- Fast Charging.
- Environment Friendly.

FEATURES

- Lithium Iron Phosphate (LiFePO4)
- Integrated Battery Management System (BMS)
- BMS with Intelligent Cell Balancing
- Sealed ABS Plastic Housing
- Bluetooth

BATTERY DATA SHEET

Electrical Parameters

| | |
|------------------------------------|-----------------------------|
| Nominal Voltage | 12.8V |
| Rated Capacity | 1280Ah |
| Energy | 1200Wh |
| Resistance | ≤30mΩ |
| Efficiency | 99% |
| Cycle Life | >2000 cycles @ 1C, 100% DOD |
| Self Discharge | 2% per Month |
| Max. Battery connected in Series | 4PCS |
| Max. Battery connected in Parallel | 20PCS |

Discharge Parameters

| | |
|-------------------------------|-----------------|
| Continuous Discharge Current | 100A |
| Peak Discharge Current | 300A(5 seconds) |
| Recommended Volt. Disconnect | 10V |
| BMS Discharge Cut-off Voltage | 8V |
| Reconnect Voltage | 9.2V |
| Short Circuit Protection | 200~600 us |

Compliance Certificate

| | |
|-------------------------|-------------------------|
| Certifications | UL1642, UL2054 |
| | CE |
| | IEC62133 & CB |
| | KC |
| | BIS |
| Shipping Classification | UN3480, Class 9, UN38.3 |

Mechanical Parameters

| | |
|-----------------------|----------------------|
| Dimension(L x W x H) | 258 x 168 x 208 mm |
| | 10.16 x 6.61 x 8.19" |
| Weight | 10.60kg(23.37lbs) |
| Terminal Type | M8 |
| Battery Housing | ABS, UL-94 V-0 |
| Housing Protection | IP65 |
| Cell Type-Chemistry | Cylindrical Cells |
| SOC Display(Optional) | None |

Charge Parameters

| | |
|----------------------------|------------|
| Charge Method | CC-CV |
| Charge Voltage | 14.4~14.8V |
| Recommended Float Voltage | 13.8V |
| Recommended Charge Current | 50A |
| Maximum Charge Current | 100A |
| BMS Charge Cut-off Voltage | 15.6V |

Temperature Parameters

| | |
|------------------------------|----------------------------|
| Discharge Temperature | -20 to 60°C (-22 to 140°F) |
| Charge Temperature | 0 to 45°C (32 to 113°F) |
| Storage Temperature | -40 to 60°C (-40 to 140°F) |
| BMS Low Temperature Cut-off | -10°C (14°F) |
| BMS Low Temperature Turn-On | 0°C (32°F) |
| BMS High Temperature Cut-off | 80°C (176°F) |
| BMS High Temperature Turn-On | 70°C (158°F) |

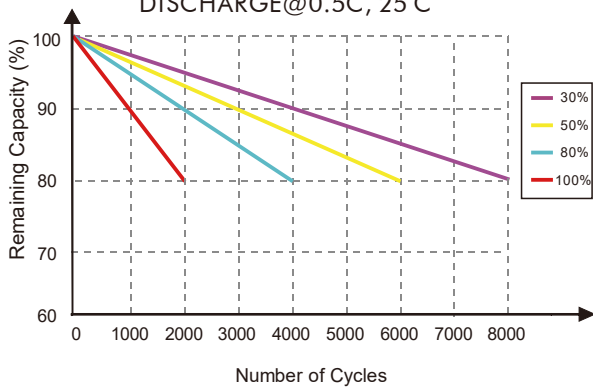
HEAD OFFICE

Unit 30 76 Hume Highway LANSVALE NSW 2166

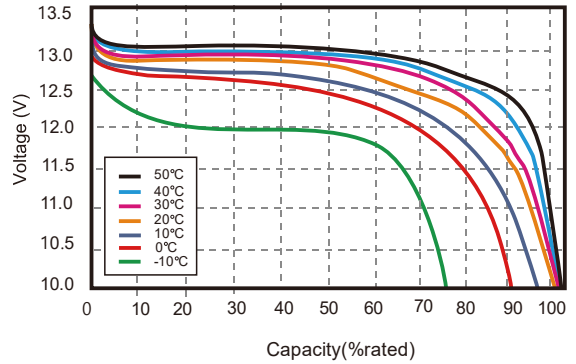
Tel: +(02) 9755 7851 Fax: +(02) 9755 7852

Email: batteries@superstart.com.au

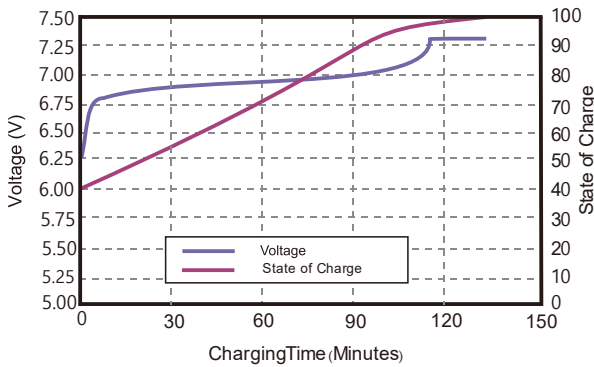
CYCLE LIFE vs. DEPTH OF DISCHARGE(DOD)
DISCHARGE@0.5C, 25°C



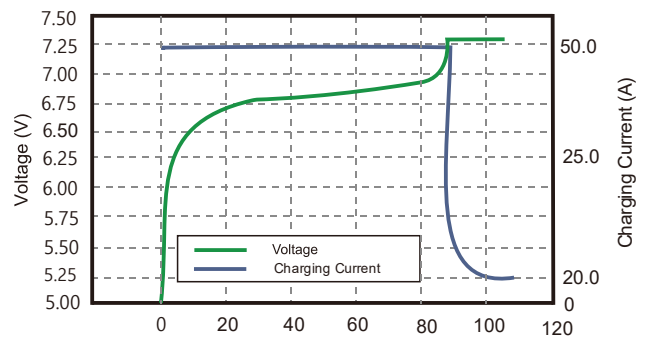
DISCHARGE CAPACITY at VARIOUS TEMPERATURES
DISCHARGE @0.5C, 25°C



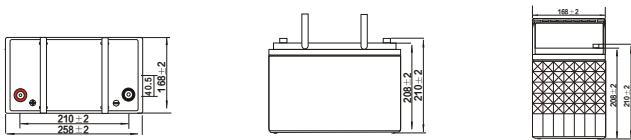
STATE OF CHARGE CURVE @0.5C, 25°C



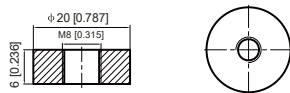
CHARGING CHARACTERISTICS @0.5C, 25°C



Battery Dimension

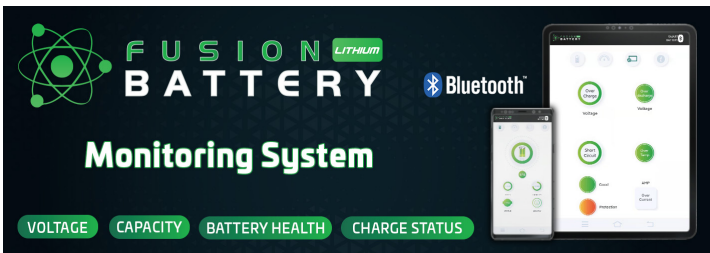


M8 - 1.0x 8mm
Threaded Hole



Battery Applications

- + Marine (House Batteries)
- + RV / Camping (Automotive)
- + Data Center UPS
- + Telecom Backup Power
- + Military Power Supply
- + Solar Energy Storage System
- + Solar Street LED Lightings
- + Autonomously Guided Vehicles (AGVs)
- + Industrial Robotics & Handling Equipment
- + Floor Cleaning Machines
- + Power Tools, Lawn Mower
- + Electric Bike & Motorcycles
- + Electric Mobilities(E-scooters, Wheelchair)
- + Golf Trolley & Golf Carts
- + Medical Devices
- + Electric Boats
- + Electric Fences



View live data with the intelligent Fusion Lithium Bluetooth 4.0 BLE technology.

Find the identification code on top of Fusion Lithium battery. Open the Fusion Lithium App and click relevant code to connect.



- Access your BMS independently with multiple batteries
- Monitor the status of your lithium battery: State Of Charge (SOC), Temperature, charging or discharging current, etc
- Track the Cycle Life of your Lithium Battery
- Assess what protections have been triggered



NOTE:

Do Not Mix with sealed lead acid batteries.
See Fusion user manual for operating Procedures.
Fusion Lithium Batteries. All Rights Reserved.

