



Specifications

Nominal Voltage	12V		
CCA	1700		
Nominal Capacity(20HR)	270.0AH		
Dimension	Length	522±2mm (20.55 inches)	
	Width	268±2mm (10.55 inches)	
	Container Height	220±2mm (8.66 inches)	
	Total Height (with Terminal)	226±2mm (8.90 inches)	
Approx Weight	Approx 73.0 Kg (160.9 lbs)		
Terminal	T11		
Container Material	ABS		
Rated Capacity	270.0AH/13.4A	(20hr, 1.80V/cell, 25 °C/77 °F)	
	252.0AH/25.0A	(10hr, 1.80V/cell, 25 °C/77 °F)	
	221.5AH/43.9A	(5hr, 1.75V/cell, 25 °C/77 °F)	
	199.9AH/66.3A	(3hr, 1.75V/cell, 25 °C/77 °F)	
	162.5AH/161.5A	(1hr, 1.60V/cell, 25 °C/77 °F)	
Max. Discharge Current	2500A (5s)		
Internal Resistance	Approx 2.5m Ω		
Operating Temp. Range	Discharge :	-15 ~ 50°C (5 ~ 122°F)	
	Charge :	0 ~ 40°C (32 ~ 104°F)	
	Storage :	-15 ~ 40°C (5 ~ 104°F)	
Nominal Operating Temp. Range	25 ± 3°C (77 ± 5°F)		
Cycle Use	Initial Charging Current less than 75.0A. Voltage	14.4V~15.0V at 25°C (77°F) Temp. Coefficient -30mV/°C	
	No limit on Initial Charging Current Voltage	13.5V~13.8V at 25°C (77°F) Temp. Coefficient -20mV/°C	
Standby Use	40°C (104°F)	103%	
	25°C (77°F)	100%	
	0°C (32°F)	86%	
Capacity affected by Temperature	SSB DryCell series batteries may be stored for up to 6 months at 25°C (77°F) and then a freshening charge is required. For higher temperatures the time interval will be shorter.		
	Warranty		
2 Years			



Applications

- ◆ Marine
- ◆ Caravans & Motorhomes
- ◆ Trucks & Earth Moving Equipment
- ◆ Golf trolleys and golf cart
- ◆ Portable apparatus, lights and instruments;
- ◆ Electric toys
- ◆ Illumination light
- ◆ Fire alarms
- ◆ Portable power
- ◆ Wheelchairs
- ◆ Medical equipments.



Constant Current Discharge (Amperes) at 25 °C (77°F)

F.V/Time	10min	15min	20min	30min	45min	1h	2h	3h	4h	5h	6h	8h	10h	20h
1.85V/cell	366.0	308.0	269.1	193.7	153.8	124.8	77.5	60.5	49.0	39.8	34.7	28.3	23.6	13.3
1.80V/cell	467.7	372.1	318.1	228.5	178.9	139.8	84.6	65.1	52.3	42.7	37.2	30.1	25.0	13.4
1.75V/cell	/	406.5	342.2	237.2	185.7	146.3	87.8	66.3	53.5	43.9	38.3	30.6	25.3	13.5
1.70V/cell	/	434.0	359.7	246.9	193.1	150.9	91.3	68.1	54.9	45.0	39.1	31.0	25.5	13.8
1.65V/cell	/	461.5	382.1	260.5	197.9	156.0	93.8	71.0	56.8	46.2	39.9	31.5	26.0	14.0
1.60V/cell	/	/	407.0	275.0	206.3	161.5	97.0	73.2	58.6	47.7	40.8	31.8	26.3	14.1

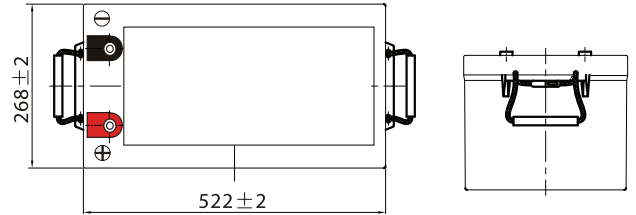
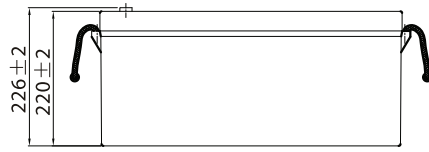
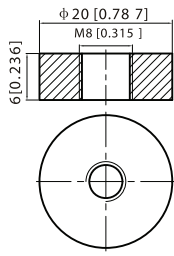
Constant Power Discharge (Watts) at 25 °C (77°F)

F.V/Time	10min	15min	20min	30min	45min	1h	2h	3h	4h	5h	6h	8h	10h	20h
1.85V/cell	682.9	580.6	512.9	372.1	297.6	242.3	151.1	118.1	95.9	78.2	68.6	56.1	46.7	26.6
1.80V/cell	861.0	691.1	597.1	433.8	343.2	269.8	163.9	126.5	101.9	83.7	73.3	59.4	49.5	26.8
1.75V/cell	/	747.7	637.0	448.1	354.5	281.2	169.5	128.4	104.0	85.7	75.2	60.3	49.9	27.0
1.70V/cell	/	792.4	665.6	464.6	367.6	289.3	175.8	131.7	106.5	87.6	76.6	61.1	50.4	27.5
1.65V/cell	/	837.1	703.8	487.9	375.4	298.1	180.2	137.0	109.9	90.0	78.2	62.0	51.4	27.8
1.60V/cell	/	/	742.0	510.1	387.7	306.2	185.1	140.5	112.9	92.5	79.7	62.6	51.9	27.9

Dimensions

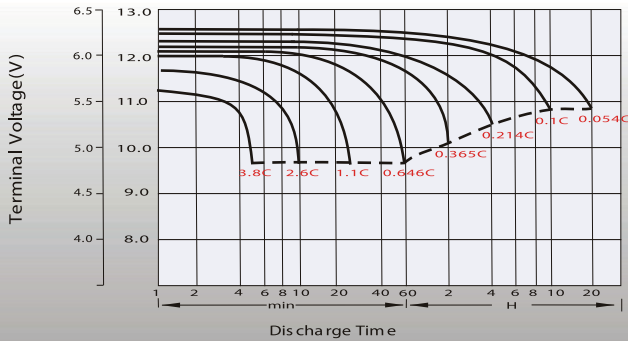
T11 Terminal

Unit: mm [inches]



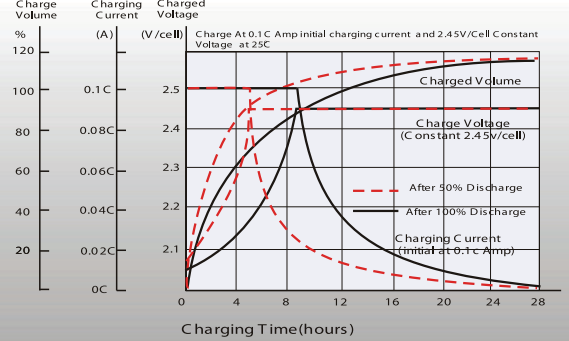
Discharge Characteristics

6V Battery 12V Battery

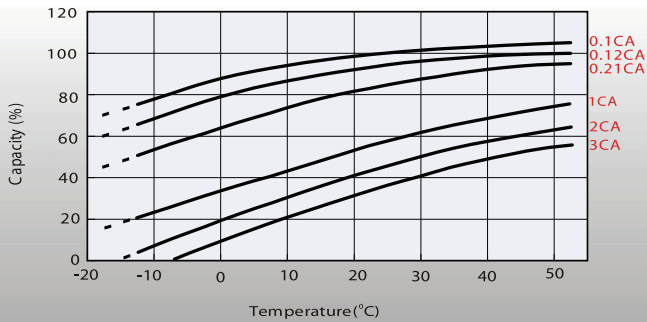


Charging Characteristics (cycle use)

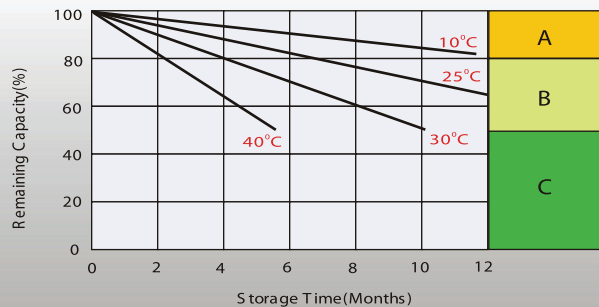
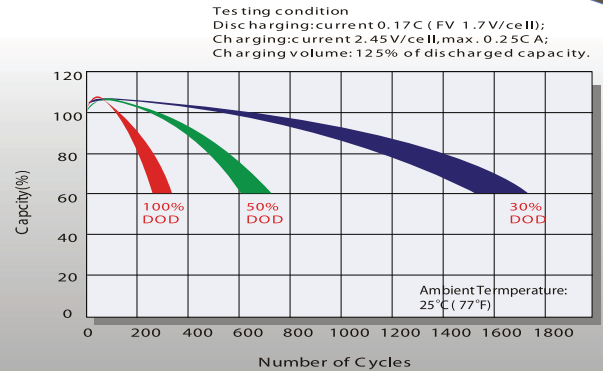
Charging Characteristics



Temperature Effects in Relation to Battery Capacity



Cycle Life in Relation to Depth of Discharge



Self Discharge Characteristics

- A** No supplementary charge required
(Carry out supplementary charge before use if 100% capacity is required.)
- B** Supplementary charge required before use. Optional charging way as below:
 1. Charged for above 3 days at limited current 0.25C A and constant voltage 2.25V /cell.
 2. Charged for above 20 hours at limited current 0.25CA and constant voltage 2.45V /cell.
 3. Charged for 8~10 hours at limited current 0.05C A.
- C** Supplementary charge may often fail to recover the capacity.
The battery should never be left standing till this is reached.

Head Office

SUPER START
BATTERIES

Unit 30
76 Hume Highway
LANSVALE NSW 2166
Tel: (02) 9755 7851 Fax: (02) 9755 7852