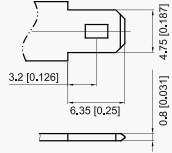


# Fusion AGM Batteries Terminal Options

## T1 Terminal

Unit: mm [inches]

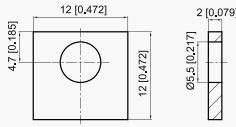
FASTON TYPE (Copper) quick disconnect tabs:  
Silver coating for better conductivity



## T3 Terminal

Unit: mm [inches]

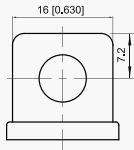
Brass Coated with Tin  
Terminal Torque 3.9 - 5.4 N m



## T5 Terminal

Unit: mm [inches]

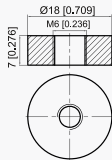
Lead  
Terminal Torque 3.9 - 5.4 N m



## T7 Terminal

Unit: mm [inches]

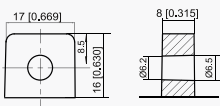
Brass Coated with Tin, Threaded Insert 6mm STUD  
Terminal Torque 3.9 - 5.4 N m



## T10 Terminal

Unit: mm [inches]

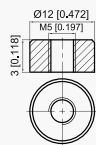
Lead  
Terminal Torque 3.9 - 5.4 N m



## T12 Terminal

Unit: mm [inches]

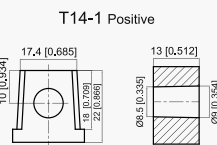
Brass Coated with Tin, Threaded Insert 5mm STUD  
Terminal Torque 2.0 - 3.0 N m



## T14 Terminal

Unit: mm [inches]

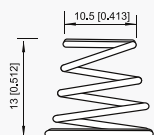
Lead  
Terminal Torque 11 - 14.7 N m



## Spring Terminal

Unit: mm [inches]

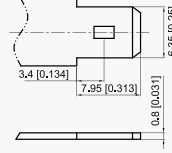
Spring Steel  
Fully Collapsible



## T2 Terminal

Unit: mm [inches]

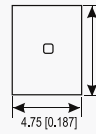
FASTON TYPE (Copper) quick disconnect tabs:  
Silver coating for better conductivity



## T4 Terminal

Unit: mm [inches]

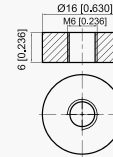
Brass Coated with Tin  
Terminal Torque 3.9 - 5.4 N m



## T6 Terminal

Unit: mm [inches]

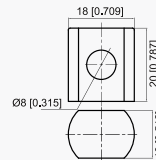
Brass Coated with Tin, Threaded Insert 6mm STUD  
Terminal Torque 3.9 - 5.4 N m



## T9 Terminal

Unit: mm [inches]

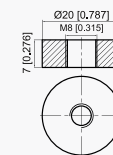
Lead  
Terminal Torque 11 - 14.7 N m



## T11 Terminal

Unit: mm [inches]

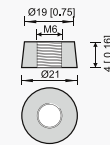
Brass Coated with Tin, Threaded Insert 8mm STUD  
Terminal Torque 11 - 14.7 N m



## T13 Terminal

Unit: mm [inches]

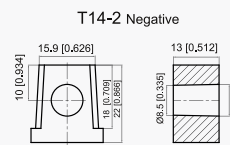
Brass Coated with Tin, Threaded Insert 6mm STUD  
Terminal Torque 3.9 - 5.4 N m



## T14 Terminal

Unit: mm [inches]

Lead  
Terminal Torque 11 - 14.7 N m



## Connector

Unit: mm [inches]

Toy Battery Connector  
H-Connector

